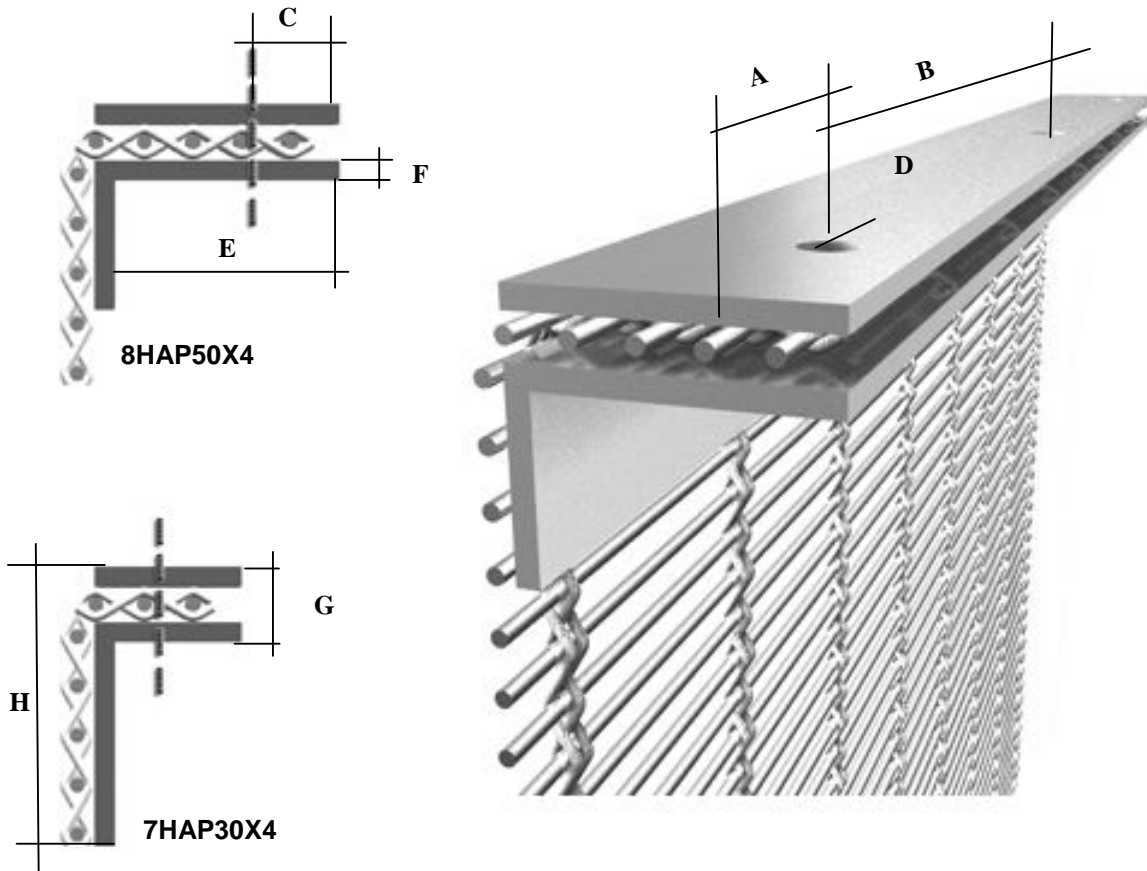
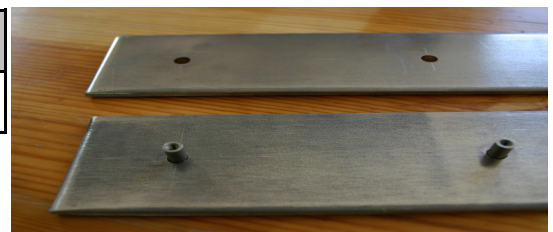


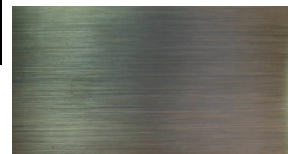
Fusiomesh Datasheet Hidden Angle Profile



| | | | | | |
|--------------------------|-------------------------------------------|---------------------|----------|----------|----------|
| 7HAP30X4 | A | B | E | F | H |
| | Max. 100 mm | Standart. 300 mm | 30 mm | 4 mm | 50 mm |
| | Mesh | G | D | C | |
| | Kiwi / Mandarin / Luna | 12 mm | 13 mm | 16 mm | |
| | Lamelle / Delphin | 13 mm | 13 mm | 16 mm | |
| Lago / Pc Lago / Capella | 14 mm | 13 mm | 16 mm | | |
| 8HAP50X4 | A | B | E | F | H |
| | Max. 100 mm | Standart. 300 mm | 50 mm | 4 mm | 30 mm |
| | Mesh | G | D | C | |
| | Kiwi / Mandarin / Luna | 12 mm | 13 mm | 16 mm | |
| | Lamelle / Delphin | 13 mm | 13 mm | 16 mm | |
| | Lago / Pc Lago / Capella | 14 mm | 13 mm | 16 mm | |
| | PC Omega / Omega | 15 mm | 13 mm | 16 mm | |
| | Baltic | 16 mm | 13 mm | 16 mm | |
| | PC Sambesi / PC Tigris / Sambesi / Tigris | 17 mm | 13 mm | 16 mm | |
| | Océan | 18 mm | 13 mm | 16 mm | |
| PC Futura / Futura | 20 mm | 13 mm | 16 mm | | |



The assembling screws are visible on one side only.
But for specific applications Fusiomes can be supplied without screws.



Stainless steel 316 or 304 brushed finish. Visible side



Treated steel finish. Visible side